

GBS

WATERPROOFING SOLUTION

WE DEVELOP QUALITY & ADD VALUE
A NETWORK OF TECHNICIANS, CONSULTANTS
AND SALES AGENTS AT YOUR SERVICE.

Our aim is to ensure that your work has successfully completed and finish with highest quality. For this purpose, we offer the services of our expert team to assist and advice you on the best solution for all of your projects. Our sales network is always available to help and we will appoint a personal representative who is qualified to give specific advice at any time.



- Waterproofing-System
- Heat-Proof-Solution
- Flooring-Coatings
- Repair-and-Restoration
- Grouts-Anchors
- Buildings-joint-sealants
- Concrete-Admixture



INTRODUCTION

Global Business Solution was established in 2004, solely for IMPORT Business. Being a dynamic organization, it has increased its business to a very high altitude. As the principle objective is to satisfy the customer, it has spread its business, in most of the district of Bangladesh as well as neighboring countries, on the strength of its high quality and service.

Global Business Solution specializes in Import of various kinds of products and technologies. As well as the business of processing with supplied materials, compensation trade, bidding & tending business and joint venture co-operation.

GLOBAL BUSINESS SOLUTION'S SUCCESS FROM THE EFFORTS OF AN EXCELLENT TEAM OF EXPERIENCED PROFESSIONALS, A MODERN COMMUNICATIVE NETWORK AND MANAGEMENT CULTURE, WHICH BELIEVES IN GIVING EXCELLENT SERVICE TO THE HONORABLE CUSTOMERS.



ABOUT US:

Company Name : Global Business Solution

Sale & Reg. Office: Room No: 311, Nawabpur Tower Market, 198 -202, Nawabpur Road, Dhaka.

Contact No: 88-02-57164405, Mobile: 01916822106

Email: info@globalbusinessbd.com website: www.globalbusinessbd.com

Proprietor: Md. Wahidur Nobi

Main Contact Person:

Mr. Tauhidul Islam (Accounts & Admin)

01717334902, 01613239090 email: tauhidgbs@gmail.com

Imrul Hassan Sajal (Manager Project)

01613239083

email: imrulgbs@gmail.com

Main Business : All Kind of waterproofing material , Constriction Chemical, Industrial Waterproofing.

Year of Establishment : 2004

Trade License No : 19380138214

Man Power: Admin & Accounts: 05, Marketing & admin: 10 , Application team :30.

BUILDING
YOUR DREAM

FLOOR SYSTEMS



Polyurethane Concrete Floor Topping

- Heavy duty Polyurethane concrete industrial resin floor topping which provides excellent mechanical, thermal and chemical resistance.
- Its durable, uniform and seamless & slip resistant and can be installed in every type of industry including kitchen, cold storage, warehouse etc.
- Foot and vehicle traffic can be allowed after 24 hours of application.
- Easy to clean and maintain.

MMA Floor Topping

- Methyl Methacrylate resin floor toppings are developed to enable fast track installations and can be applied in extreme cold and hot climatic conditions
- Rapid installation and fast curing.
- Can be overlaid onto existing ceramic tiles, marble, granite, terrazzo and timber floors
- Hard wearing, high scratch and chemical resistance.
- Easy to clean and maintain.





Polyurethane Floor Topping

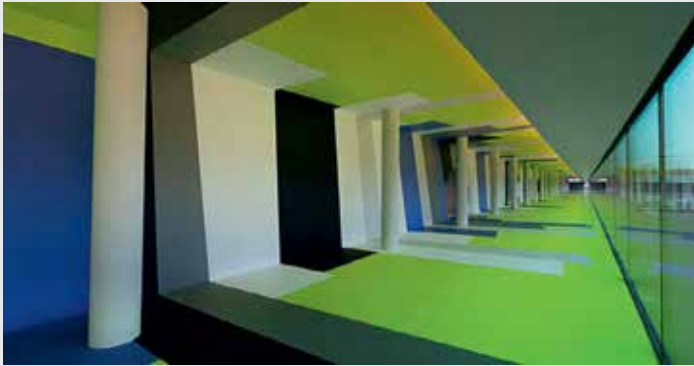
- Medium duty self-smoothing resilient system which provides tough scratch resistant floor for use on substrates subject to vibration and dynamic forces.
- Antistatic floor topping version for Pharma, electronics or solvent expose areas.
- Easy to clean and maintain.
- Non-tainting and non-dusting.
- Good chemical resistance.

Epoxy Floor Topping

- Self-smoothing, solvent free floor topping system to protect from common chemicals.
- Vibrant and Glossy floor topping for commercial and industrial floors.
- Suitable for Pharmaceutical & other medical laboratory/ clean rooms.



FLOOR SYSTEMS



Commercial/ Comfort Floor Topping

- Decorative sound deadening seamless PU flooring systems that create the most comfortable solution in the market of liquid applied flooring systems.
- Deadens impact noise by -16dB to -20dB.
- Improves acoustics.
- Durable and Hard wearing system.
- Low maintenance cost.
- Alternate to Carpet flooring with patterns.

Cementitious Self Leveling Floor Topping

- Self-smoothing, cementitious floor underlayment which will be covered by resin overlays, carpet, vinyl, ceramic tiles or natural stone.
- Highly fluid and pumpable for fast installation.
- Rapid strength gain for fast installation of floor coverings.
- Return to service in 24 Hours.





Car Park Deck Coatings

- Aesthetic but Performance oriented floor topping which protects the substrate from abrasion, resistance to slip & prevents oil penetration.
- Excellent chemical resistance to engine oil and battery acids Fast track installation Excellent bond strength

Hardscape Flooring

- Stamped concrete flooring is an aesthetic, durable, high abrasion resistant flooring which provides a broad choice of patterns such as random stone, brick, cobble stone, granite, ashler stone etc suitable for driveways and pathways.
- Monolithic finish eliminating joints compared to pavers & tiles.
- Low maintenance cost.
- Broad choice of patterns and colors.
- Quick installation.



WATERPROOFING



Two Component Spray / Roller Applied Polyurethane

- Two component spray/ roller applied Polyurethane system is liquid applied, crack bridging, elastomeric coating which can bond with various types of building materials such as concrete, clay tile, china mosaic, glass mosaic, mild steel, PVC etc.
- Crack bridging capacity upto 5mm width
- Rapid installation and fast setting
- Monolithic and fully bonded
- Solvent and monomeric isocyanate free
- Suitable for contact with potable water

Preformed Membrane waterproofing system

- Synthetic membranes obtained by co-extrusion which can be mechanically fixed or fully bonded with adhesives
- Extremely high resistance to weathering and UV rays. High mechanical properties and resistance to puncturing
- Double seam welding which allows pressure testing of joints. Long life expectancy. Non-toxic and ecological
- Compatible with insulation systems. Resistance to root penetration. Loose laid to act independently of structural movement



WATERPROOFING



Pitch Modified Polyurethane

- Liquid applied Polyurethane based elastomeric coating for roof and podium slabs
- Excellent adhesion to concrete and fully bonded system
- Bitumen based coating to build required thickness in single coat
- Easy to apply
- Monolithic with no laps and welds

Acrylic Based Mastic System for Wet Areas

- Single component, flexible, mastic waterproofing system for wet areas like shower, bathroom
- Can be applied over plaster surface, gypsum fibre board, wooden chipboard etc
- Flexible, compensates tensions, deformations of substrate
- Good crack bridging capacity
- Eliminates traditions coving by replacing with special fleece-lined rubber tape



PROTECTIVE COATINGS



Waterproofing cum Protective Coating

- ▶ Waterproofing cum Protective coatings for OHT, UG sump, STP&ETP structures.
- ▶ Hand application by roller or brush
- ▶ Monolithic membrane
- ▶ Waterproof and resistant to standing water
- ▶ Moisture tolerant
- ▶ High resistance to carbon dioxide diffusion
- ▶ High abrasion and impact resistance
- ▶ Tough but flexible and crack bridging
- ▶ High durability

Elastomeric coatings

for residential and commercial buildings

- ▶ Water based, aliphatic acrylic, crack bridging, elastomeric, protective cum waterproof coating for concrete and masonry structures
- ▶ Anti-Carbonation and Sulphate coating
- ▶ UV Resistant
- ▶ Resists dirt pickup and growth of fungus
- ▶ Copes with thermal movement of buildings
- ▶ Coating is washable with excellent durability



WATERTIGHT INJECTION SYSTEMS



Epoxy Injection System

- ▶ Low viscous epoxy resin to stabilise the cracks in structural members
- ▶ Densifying the void space
- ▶ Bonding of steel plates to concrete
- ▶ Rapid structural repair of concrete
- ▶ Grouting of dowels
- ▶ Low VOC & non-shrink

Polyurethane Injection Foam System

- ▶ Highly reactive Polyurethane injection foam to stop low, medium & high volume water ingress
- ▶ Forms a rigid foam when in contact with water



EXPANSION JOINT SYSTEMS



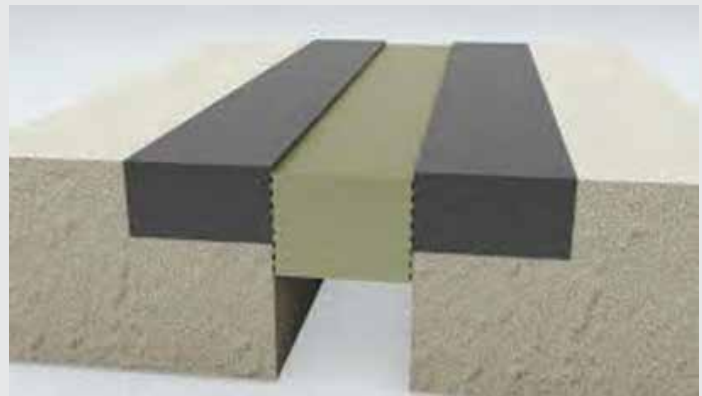
Sealing Tape

for irregular and unconventional joints

- ▶ Highly elastic, rot-proof and chemically resistant sealing membrane
- ▶ Durable, Rot resistant, long lasting elasticity
- ▶ Easy to apply
- ▶ Can be applied horizontally, vertically & even overhead

Elastomeric Polyurethane Mortar

- ▶ Polyurethane with speciality aggregate which bonds the expansion joint to the deck
- ▶ Absorbs traffic impact loads and disperses them to the deck.
- ▶ Rapid installation.
- ▶ Bonds to concrete, steel and aluminium surfaces.
- ▶ Prevents edge breaking of deck.



GBS-IN Expro



SOME OF OUR PROJECTS



GOVERNMENT UTTARA HOUSING PROJECT



N. Mohammed Spening Mill



SAUDI EMBASSY DHAKA PROJECT



Dhaka City corporation Ujirpur,karinigong.



Government Housing Mirpur, Kalshi, Project.

SOME OF OUR PROJECTS



Port Authority Tennis Court, Chattogram



S. Alam Private Residence Helipad.



Private Residence in Gulshan 2



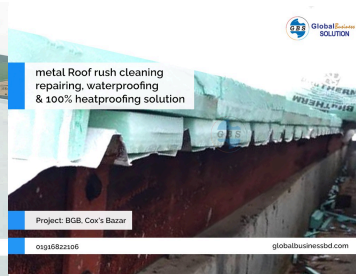
Hotel Intercontinental Dhaka.

SOME OF OUR PROJECTS

POSCO Engineering & Construction Ltd. P



BGB Project



Sornolota Dhanmondi Project



Uni Chem Agro (RMD Group)



Our Projects

1. Matarbari Coal Power Plant, Cox's Bazar.
2. Reliance Meghna Power Plant, Meghna Ghat, Dhaka.
3. S. Alam Private Residence Helipad.
4. Port Authority Tennis Court, Chattogram.
5. Bangabandhu Medical College, Sunamganj.
6. Army Multi-Purpose Complex, Matikata Mirpur Cant.
7. National Housing Authority Apartment- Kalshi.
8. National Housing Authority Apartment - Vasantek.
9. Cross Border Road Network Improvement Project, Jassore.
10. Jahangirnagar University Boys Hostel.
11. FDC - Kawran Bazar
12. Creative Paper Mill, Narayanganj.
13. Four H Garments Oxygen, Chittagong.
14. Officer's Club, Mintu Road- Dhaka.
15. Officer's Mess - Comilla Police Lines.
16. Private Residence in Gulshan 2.
17. Tiger House, Chittagong Cantonment, Chittagong
18. Chittagong wasa basement– under Jamal & co.
19. Wasa Residential Gulshan -02 basement
20. Royal Embassy of KSA, Baridhara, Dhaka.
21. Sheikh Hasina National Inst. Of Burn & Plastic surgery Dhaka
22. Bangabandhu Military Museum, Bejoy Sharoni, Dhaka.
23. World Bank, Bangladesh
24. ANZ properties – Silverlake H#304, Rd# 119 Gulshan – roof
25. British Embassy (AJAX) DFID Project Baridhara.
26. Hotel Intercontinental, 1 Minto Road, Dhaka
27. Police Commissioner Chittagong residence – Roof
28. S. Alam International Hospital basement
29. Equity Well City Center basement
30. PWD – Ajimpur residential basement

Our Projects

31. CPDL – Celine- 8, Mahedibag, Roof
32. Incepta Pharmaceuticals Ltd, Zirabo, Shavar.
33. Concord – SMC tower project
34. Desh Unnayan Ltd, - Uttara Apartment building Project.
35. PcP-Dhankhali Union, Londa Kheya Ghat, Kolapara, Payra Potuakhali
36. MHB-Manikgonj Hospital Building, Gorpara, Manikgonj.
37. Imperial Hospital, Chittagong
38. Basement Building –D, AIUB Permanent Campus project, Kurial, Kuratoli
39. PWD jessore residential basement
40. New Hope China Project, Kadnia, Jamunar par, Fulbaria, Mymensingh Fanchugong power plant
41. Malak Spinning Mills
42. Snotex Apparels, Snowtex Outerwear Ltd. B-65/3, Lakuria Para Dhulivita, Dhamrai, Dhaka, Bangladesh
43. Shamsuddin Meaha Associate- Dhaka cantonment Project
44. Dhaka Wasa- Genetor Division Mirpur-1, Bangla College
45. Dhaka City Corporation – Rasulpur Cuminuty center, Kamrangirchar.
46. Mirpur -16 – Basement - under Hassan & sons
47. POSCO Engineering & Construction Ltd.
48. BGB Project
49. ARINA LILY , East Rajabazar, Farmgate
50. Sornolota Dhanmondi Project
51. Maidas Safty
52. Rupsi Narayanganj Project
53. Uni Chem Agro

Successfully used in Projects For:



Malek Spinning Mills Ltd.



Apex textile ltd



National Development Engineers Ltd.



Incepta Pharmaceuticals Ltd
Innovative Concept Into Practice
Dhaka City Corporation



THE ASSURE GROUP

Royal Embassy OF KSA, Dhaka.



DFID
Bangladesh



SECURITY SOLUTIONS
NAVANA CONSTRUCTION



IMPERIAL HOSPITAL LIMITED



Construction & Co. Ltd.



MEGHNA
GROUP OF
INDUSTRIES





Global Business Solution

📍 Room No-311, (2nd Floor) Nawabpur Tower Market. 198-202 Nawabpur Road, Dhaka-1100, Bangladesh.

☎ +88 02 41052849, 01916-822106

✉ info@globalbusinessbd.com

📍 Badda Office: 1T-94/B, Baishakhi Shoroni, Middle Badda, Dhaka, 1212, Bangladesh.

☎ +88 01613-239093